

# BurnInTest Certificate



## Certificate Details

Report Date	Mon Jun 9 12:41:53 2025
Generated by	BurnInTest Version 11.0 (64-bit)

## System Summary

Computer name	TOBIASPC2025
Motherboard	
Manufacturer	ASRock
Product name	Z890 LiveMixer WiFi
Version	
Serial number	M80-H9024700119
BIOS	
Vendor	American Megatrends International, LLC.
Version	3.03
Release date	04/22/2025
Serial number	To Be Filled By O.E.M.
TPM	Available, V2.0
Test operating system	Windows 11 Professional Edition build 26100 (64-bit)
CPU type	Intel(R) Core(TM) Ultra 7 265K
Clock speed	3879.9 MHz [Turbo: 5372.2MHz]
Logical cores / CPU	20
L1 data cache	8 x 48K
L1 instruction cache	8 x 64K
L2 cache	8 x 3072K
L3 cache	1 x 30720K
RAM	48583 MB
Memory Transfer Rate	7980 MT/s
Memory Timings	40-48-48-128
Memory Channel Mode	2
# RAM slots	4
Controller0-ChannelA-DIMM0	Empty slot
Controller0-ChannelA-DIMM1	DDR5, 24576MB, 5600MHz, F5-8000J4048F24G, Serial#: 345F8DF1
Controller0-ChannelB-DIMM0	Empty slot
Controller0-ChannelB-DIMM1	DDR5, 24576MB, 5600MHz, F5-8000J4048F24G, Serial#: D9547EF1
# SPDs detected	2
SPD #0	24GB DDR5 SDRAM PC5-44800 G Skill Intl F5-8000J4048F24G, serial#: 0xD9547EF1, wk/yr: 17/2025
SPD #1	24GB DDR5 SDRAM PC5-44800 G Skill Intl F5-8000J4048F24G, serial#: 0x345F8DF1, wk/yr: 17/2025
Video card	Intel(R) Graphics (25580MB)
Video card	NVIDIA GeForce RTX 5060 Ti (16311MB)
Monitor 2	1920x1200x32 59Hz 96 DPI (Primary monitor)
Monitor 1	1920x1200x32 59Hz 96 DPI
Disk drive	del: Samsung SSD 870 EVO 1TB Serial: S6PUNX0T308434B (Disk: 1, SSD, Size: 931.51GB, Interface: SATA, Volumes: A)
Disk drive	del: Samsung SSD 850 EVO 250GB Serial: S2R6NX0HC00729P (Disk: 0, SSD, Size: 232.88GB, Interface: SATA, Volumes: B)

<b>Disk drive</b>	del: Samsung SSD 990 EVO Plus 2TB Serial: S7U7NJ0XB23758T (Disk: 4, SSD, Size: 1863.01GB, Interface: NVMe, Volumes: G I)
<b>Disk drive</b>	del: Samsung SSD 990 EVO Plus 2TB Serial: S7U7NJ0XB23761R (Disk: 3, SSD, Size: 1863.01GB, Interface: NVMe, Volumes: F H)
<b>Disk drive</b>	del: Samsung SSD 990 PRO 2TB Serial: S6Z2NU0XB28152L (Disk: 2, SSD, Size: 1863.01GB, Interface: NVMe, Volumes: C D E)
<b>Network</b>	Realtek Gaming 2.5GbE Family Controller (Speed: 1.0Gb/s) (MAC: 9C:6B:00:8A:7D:F4)
<b>Network</b>	Intel(R) Wi-Fi 7 BE200 320MHz (MAC: 28:A0:6B:11:BF:DE)
<b>Network</b>	Bluetooth Device (Personal Area Network) (Speed: 3Mb/s) (MAC: 28:A0:6B:11:BF:E2)
<b>USB Devices</b>	Logitech Logitech Illuminated Keyboard Intel(R) Wireless Bluetooth(R) TS-RDF5 Transcend (SN: 0000000000039) Logitech USB Receiver

## Result Summary

<b>Test Start time</b>	Mon Jun 9 12:38:18 2025
<b>Test Stop time</b>	Mon Jun 9 12:41:20 2025
<b>Test Duration</b>	000h 03m 02s

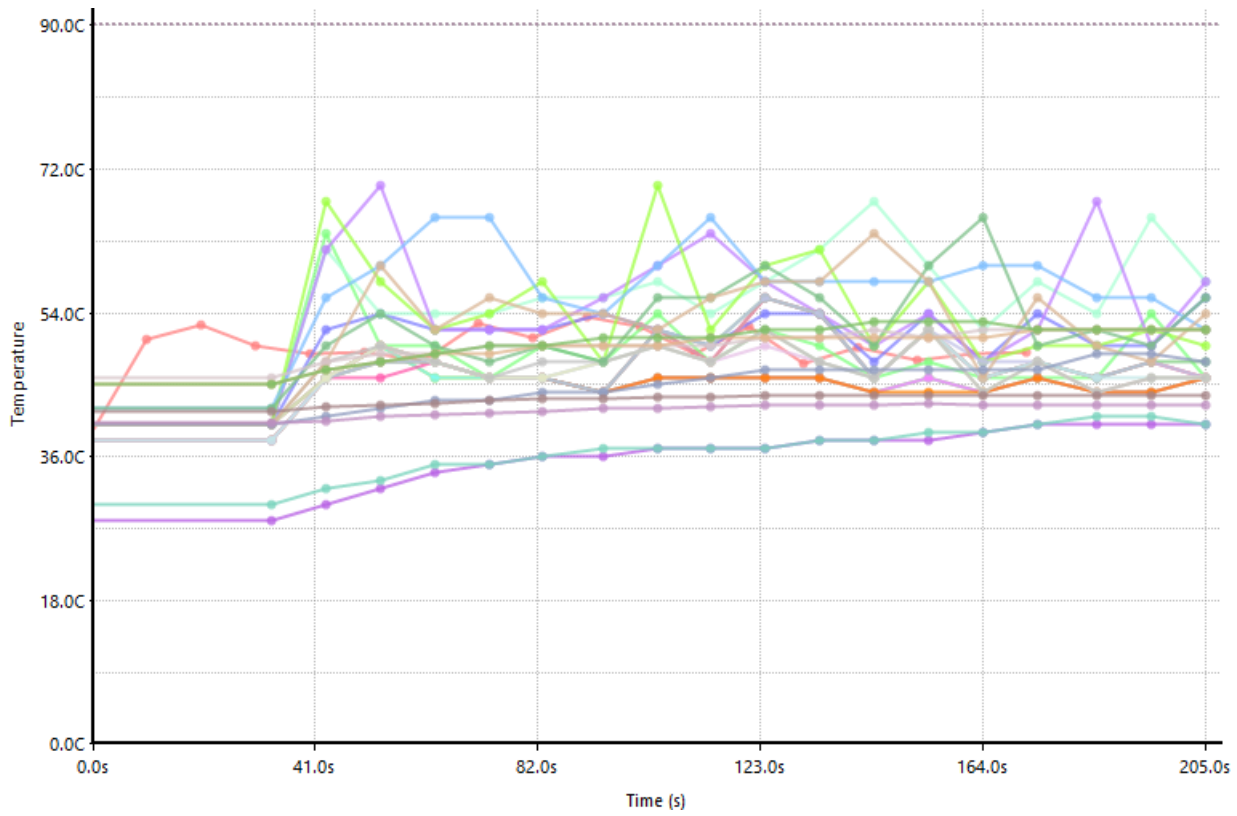
Test	Result
CPU	<b>PASS</b>
Memory (RAM)	<b>PASS</b>
2D Graphics	<b>PASS</b>
3D Graphics	<b>PASS</b>
Temperature	<b>PASS</b>
Sound	<b>PASS</b>
Video Playback	<b>PASS</b>
Disk (A:)	<b>PASS</b> (Read/Write) 474.0MB/s / 270.4MB/s
Disk (B:)	<b>PASS</b> (Read/Write) 463.3MB/s / 241.1MB/s
Disk (C:)	<b>PASS</b> (Read/Write) 1092.0MB/s / 1538.9MB/s
Disk (D:)	<b>PASS</b> (Read/Write) 1070.6MB/s / 1601.7MB/s
Disk (E:)	<b>PASS</b> (Read/Write) 1056.2MB/s / 1512.3MB/s
Disk (F:)	<b>PASS</b> (Read/Write) 986.8MB/s / 1141.8MB/s
Disk (G:)	<b>PASS</b> (Read/Write) 983.7MB/s / 1098.7MB/s
Disk (H:)	<b>PASS</b> (Read/Write) 928.3MB/s / 1180.5MB/s
Disk (I:)	<b>PASS</b> (Read/Write) 1069.5MB/s / 1128.9MB/s

**TEST RUN PASSED**

<b>Notes</b>	
--------------	--

## Temperature

Key	Sensor	Current	Minimum	Maximum	Threshold
	CPU 0 average	49.2C	39.4C	57.8C	90.0C
	CPU 0 core 0	46.0C	40.0C	64.0C	90.0C
	CPU 0 core 1	56.0C	40.0C	56.0C	90.0C
	CPU 0 core 2	46.0C	38.0C	50.0C	90.0C
	CPU 0 core 3	46.0C	38.0C	50.0C	90.0C
	CPU 0 core 4	46.0C	38.0C	50.0C	90.0C
	CPU 0 core 5	46.0C	38.0C	50.0C	90.0C
	CPU 0 core 6	58.0C	40.0C	68.0C	90.0C
	CPU 0 core 7	58.0C	40.0C	70.0C	90.0C
	CPU 0 core 8	50.0C	40.0C	70.0C	90.0C
	CPU 0 core 9	52.0C	42.0C	66.0C	90.0C
	CPU 0 core 10	46.0C	40.0C	56.0C	90.0C
	CPU 0 core 11	46.0C	38.0C	56.0C	90.0C
	CPU 0 core 12	48.0C	40.0C	56.0C	90.0C
	CPU 0 core 13	46.0C	38.0C	56.0C	90.0C
	CPU 0 core 14	46.0C	38.0C	52.0C	90.0C
	CPU 0 core 15	46.0C	38.0C	52.0C	90.0C
	CPU 0 core 16	46.0C	40.0C	52.0C	90.0C
	CPU 0 core 17	46.0C	40.0C	52.0C	90.0C
	CPU 0 core 18	56.0C	42.0C	66.0C	90.0C
	CPU 0 core 19	54.0C	40.0C	64.0C	90.0C
	SSD 0 (Samsung SSD 850 EVO 250GB)	40.0C	28.0C	40.0C	90.0C
	SSD 1 (Samsung SSD 870 EVO 1TB)	40.0C	30.0C	41.0C	90.0C
	SSD 2 (Samsung SSD 990 PRO 2TB)	52.0C	46.0C	52.0C	90.0C
	SSD 3 (Samsung SSD 990 EVO Plus 2TB)	52.0C	45.0C	52.0C	90.0C
	SSD 4 (Samsung SSD 990 EVO Plus 2TB)	52.0C	45.0C	53.0C	90.0C
	GPU 0 (NVIDIA GeForce RTX 5060 Ti)	48.0C	40.0C	49.0C	90.0C
	DIMM 0 (G Skill Int'l F5-8000J4048F24G)	43.8C	41.8C	43.8C	90.0C
	DIMM 1 (G Skill Int'l F5-8000J4048F24G)	42.5C	40.2C	42.8C	90.0C



## Certification

This document certifies that the Tests described above have been carried out by a suitably qualified technician on the System described above.

Signed

-----

Generated by BurnInTest - PassMark Software

Put your company name here:

123 Example Address  
 Phone: +01 2 3456 7899  
 E-Mail: info@company.com